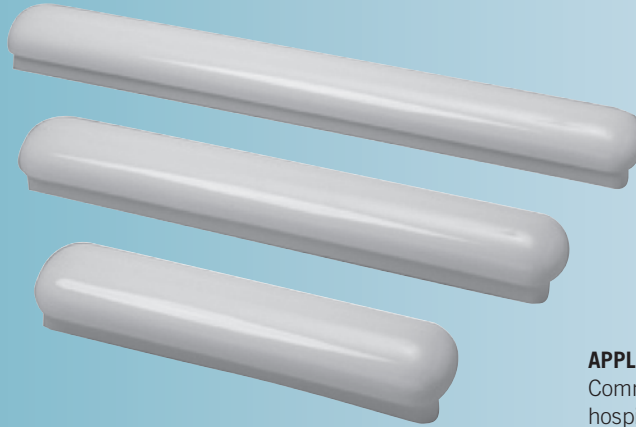
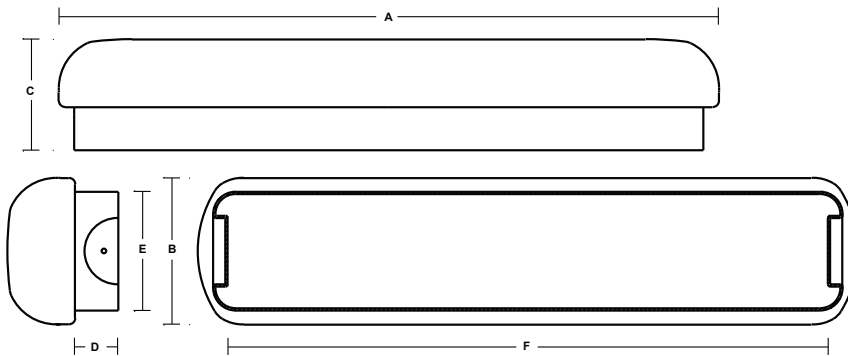


400 Puff Reverse LED



APPLICATIONS

Commercial, residential and hospitality installations.



DIMENSIONS

A	B	C	D	E	F
26.75"	6.00"	4.125"	1.50"	4.625"	24.0625"
38.75"	6.00"	4.125"	1.50"	4.625"	36.0625"
50.75"	6.00"	4.125"	1.50"	4.625"	48.0625"

Dimensions should be confirmed via review or a production sample. Above Drawing and Dimensions Chart is for referen

CONSTRUCTION

The economy pan, a basic all purpose fluorescent light fixture, has a wide range of applications.

Die-formed of 20 gauge cold rolled steel. Ends pop into position and accept slide-on or screw-on sockets.

MOUNTING

Fixtures are designed for surface mounting.

FINISH

Phosphate coated, highly reflective, baked, white enamel.

PLASTIC

This Diffuser utilizes the unobtrusive puff design in a compact linear shape. The diffusers are suitable for either ceiling or wall mounts in commercial, residential, or hospitality applications. A hole and plug kit is available in which a solid knockout plug can be inserted into the knockout on the end plates of the fixture, and the lens is attached to the fixture via screws provided in the knockout kit.

ELECTRICAL

Fixtures and components are all assembled by I.B.E.W. union workers, and are UL and NYC approved. Knockouts are provided on the back and ends for all types of wiring.

OPTIONS

Check product key or consult factory for available options.

LED

13w 2 - Keystone Boards 1600 Lumens
25w 2 - Keystone Boards 4200 Lumens
 Keystone Drivers
 0-10v Dimming

400 - PR - [] - [] - [] - [] = Product Number

Series	Description	# of Lamps	Wattage	Size	Voltage	Options
	Puff Reverse		13W-LED 25W-LED	24" 48"	UNV	EM - Emergency Ballast 35K - 3500 Kelvin * 41K - 4100 Kelvin

* Standard

Puff Reverse (Product Number eg.: 400-PV-214-T-277-R)
* Only available in T5 and T8 ** Only available in T5