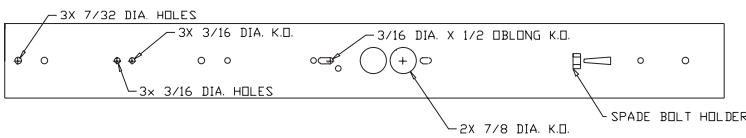


102 Wall Wrap LED

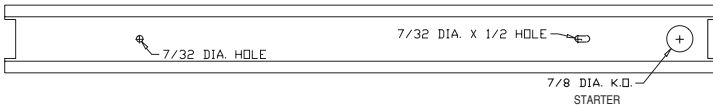


APPLICATIONS
Bathrooms, Stairwells

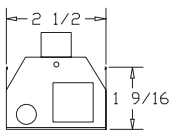
TOP W/O DIFFUSER



COVER

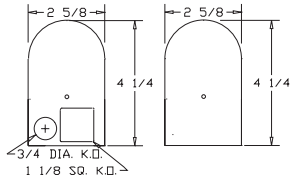


END W/O PLATE

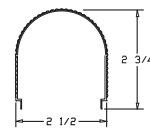


END PLATE

STANDARD PAIR IS ONE PLAIN AND ONE WITH KOs



DIFFUSER RIBBED



CONSTRUCTION

Die-formed and spot welded 20 guage cold rolled steel housing.

Plastic is held in place on both ends by end caps with a single acorn type nut.

Spot welded for maximum rigidity.

MOUNTING

Wall mounted. Mounts over electrical junction box. Mounting holes are provided. End caps can be removed for continuous row mounting with optional joiner band.

FINISH

Available in chrome or white.

PLASTIC

Ribbed white acrylic diffuser.

ELECTRICAL

Fixtures and components are all assembled by I.B.E.W. union workers, and are UL and NYC approved.

Knockouts are provided on the back and ends for all types of wiring.

OPTIONS

Check product key or consult factory for available options.

LED

13w 1 - Keystone Board 2200 Lumens

25w 2 - Keystone Boards 4200 Lumens

Keystone Drivers

0-10v Dimming

102 - WR - [] - [] - [] - [] = Product Number

Series	Description	# of Lamps	Wattage	Size	Voltage	Options
	WRaparound		13W-LED	24"	UNV	EM - Emergency Ballast
			25W-LED	48"		35K - 3500 Kelvin *
						41K - 4100 Kelvin
						CO - Conv. Outlet
						SW - Switch

* Standard

Wraparound (Product Number eg.: 400-PV-214-T-277-R)