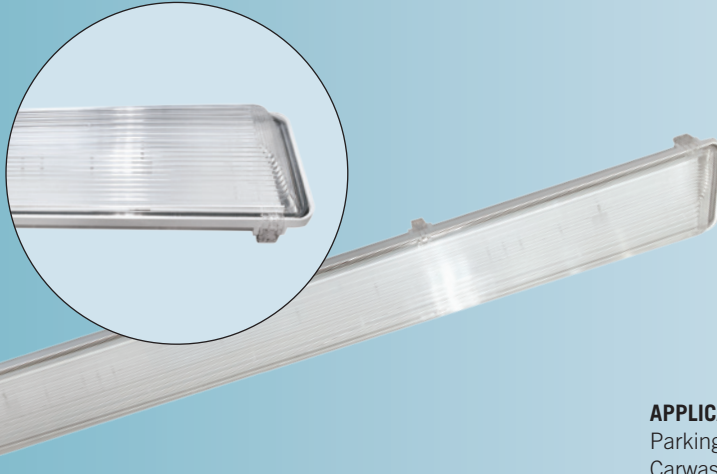


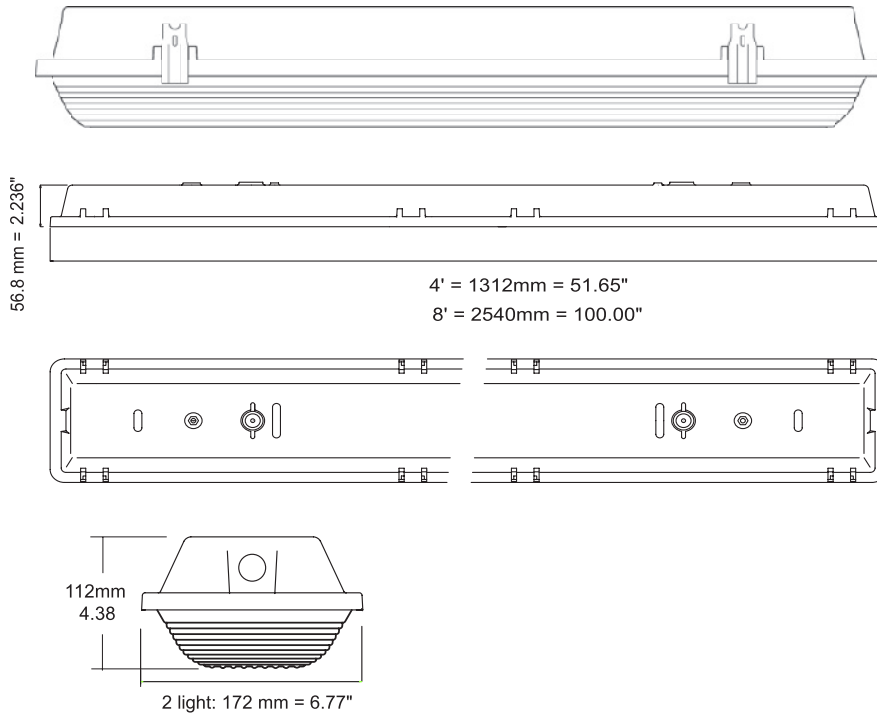


850 Citadel VP



APPLICATIONS

Parking garages, Workshops, Canopies
Carwash, Cold storage, Food processing
Wet, damp or dusty environments.



CONSTRUCTION

Fiberglass housing combined with a heavy duty High impact acrylic plastic. For superior ingress resistance the acrylic diffusers offer a unique detailing that maximizes the seal with the gasket. Polycarbonate latches hold the diffuser in place. The Hole is 7/8" diameter and is provided with a plastic plug on both ends for conduit attachment. Rather than having to add the expense and weight of a strip fixture citadel uses a gear tray that will efficiently carry the electrical gear.

MOUNTING

Offset mounting pads which keeps fiberglass housing level and slightly off of mounting surface, are formed within the housing. Mounting brackets are available

PLASTIC

Heavy duty high impact acrylic diffuser with high efficiency clear ribbed design.

ELECTRICAL

Fixtures and components are all assembled by I.B.E.W. union workers, and are UL and NYC approved. Knockouts are provided on the back and ends for all types of wiring. Slide-on or snap-in sockets are provided. Ballast and sockets are replaceable without removing the fixture from the mounting surface. Standard ballasts are electronic 120v.

OPTIONS

Check product key or consult factory for available options.

CERTIFICATIONS

IP65 Certified
IP67 Certified

850	-	CI	-		-		-		-		=	Product Number
Series	Discription	# of Lamps	Wattage	Size	Voltage	Options						
	Citadel VP	2	40-40w T12	T-8'	120v	EM - Emergency Ballast						
		3	96-96w T12	Tandem	277v	HO - High Output						
		4	32-32w T8		UNV	SS - Stainless Latches						
			59-59w T8			MS - Motion Sensor						
			28-28w T5									
			54-54w T5									

Citadel VP (Product Number eg.: 400-PV-214-T-277-R)