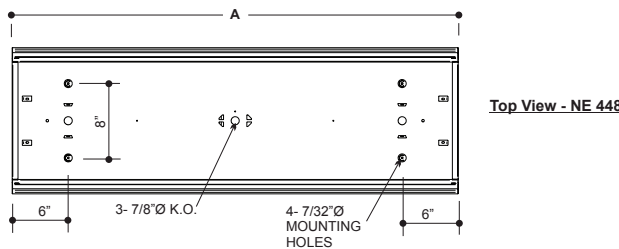
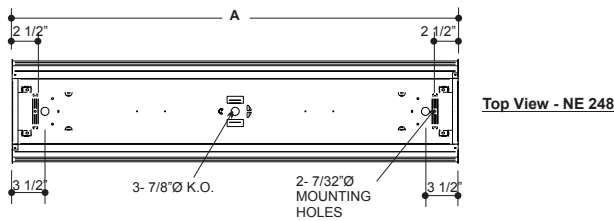


300 Wraparound LED



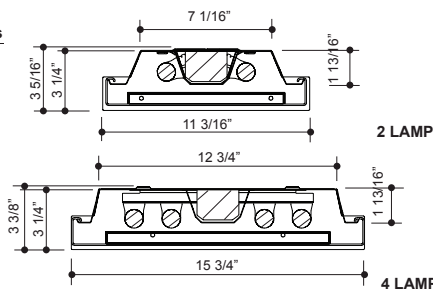
APPLICATIONS

Retail Stores, Offices, Class Rooms, Stairwells, Corridors, Kitchens, Utility Rooms.



Cross Sections

| | | |
|--|--|--|
| | | |
| | | |
| | | |
| | | |
| | | |
| | | |



CONSTRUCTION

Die formed, 20 gauge pre-painted highly reflective white steel housing. Inspection knockouts provided on 4' units, for mounting to junction box. Ballast cover snaps into place eliminating the need for tools when accessing the ballast. Diffuser hinges from either side in a lift and shift manner and is self centering. End caps may be butted together for continuous row mounting. Knockouts are provided for flexible conduit attachment.

MOUNTING

Mounts over electrical junction box. Offset mounting pads keep the bulb level and slightly off of mounting surface. Mounting holes are offset to prevent distortion of housing when tightening mounting fasteners. Knock-outs are provided for stem mounting.

FINISH

Phosphate coated, highly reflective, baked, white enamel.

PLASTIC

Wraparound, extruded clear acrylic diffuser with prismatic bottom and ribbed linear sides, designed for high efficiency and visual comfort.

ELECTRICAL

Fixtures and components are all assembled by I.B.E.W. union workers, and NYC approved.

Knockouts are provided on the back and ends for all types of wiring.

Keystone LED Boards and Drivers

0-10v Dimming
Rated for 50,000 Hours

OPTIONS

Check product key or consult factory for available options.

300 - WR - [] - [] - [] - [] = Product Number

| Series | Description | # of Lamps | Wattage | Size | Voltage | Options |
|--------|-------------|------------|---------------------|------|---------|------------------------|
| WR | Wraparound | | 20W-LED | 2FT | UNV | EM - Emergency Ballast |
| | | | 25W-LED | 4FT | | |
| | | | 50W-LED | 8FT | | |
| | | | 13W - 3,300 Lumens | | | |
| | | | 25W - 5,000 Lumens | | | |
| | | | 50W - 10,000 Lumens | | | |

Wraparound

(Product Number eg.: 400-PV-214-T-277-R)