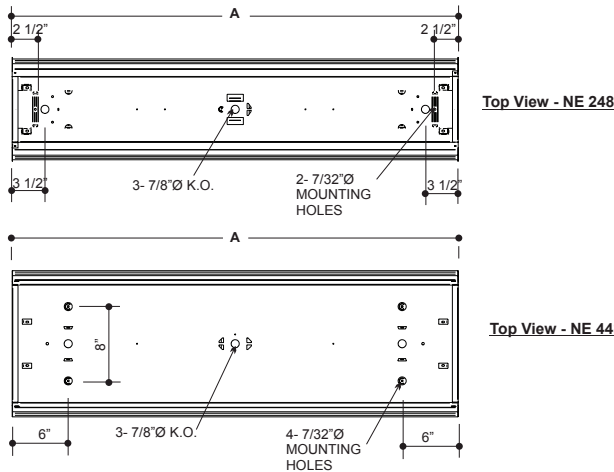


# 300 Wrap LED Bulbs



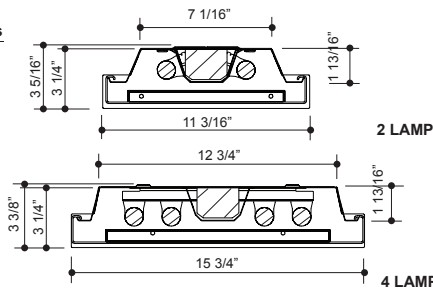
## APPLICATIONS

Retail Stores, Offices, Class Rooms, Stairwells, Corridors, Kitchens, Utility Rooms.



## Cross Sections

MODEL		LENGTH A (in)
2 LAMP	4 LAMP	
224	42	24
236	43	36
248	44	48
248/2	448/2	96
296	49	96



## CONSTRUCTION

Die formed, 20 gauge pre-painted highly reflective white steel housing. Inspection knockouts provided on 4' units, for mounting to junction box. Ballast cover snaps into place eliminating the need for tools when accessing the ballast. Diffuser hinges from either side in a lift and shift manner and is self centering. End caps may be butted together for continuous row mounting. Knockouts are provided for flexible conduit attachment.

## MOUNTING

Mounts over electrical junction box. Offset mounting pads keep the bulb level and slightly off of mounting surface. Mounting holes are offset to prevent distortion of housing when tightening mounting fasteners. Knock-outs are provided for stem mounting.

## FINISH

Phosphate coated, highly reflective, baked, white enamel.

## PLASTIC

Wraparound, extruded clear acrylic diffuser with prismatic bottom and ribbed linear sides, designed for high efficiency and visual comfort.

## ELECTRICAL

Fixtures and components are all assembled by I.B.E.W. union workers, and NYC approved.

Knockouts are provided on the back and ends for all types of wiring.

Slide-on or snap-in sockets are provided.

Sockets are replaceable without removing the fixture from the mounting surface.

## OPTIONS

Check product key or consult factory for available options.

300 - WR - [ ] - [ ] - [ ] - [ ] = Product Number

Series	Description	# of Lamps	Wattage	Size	Voltage	Options
WR	Wraparound	2	220-LED	2FT	UNV	EM - Emergency Ballast R - Silver Reflector
		4	420-LED	2FT		
			240-LED	4FT		
			240-T-LED	8FT		
			440-LED	4FT		
			440-T-LED	8FT		

\*\*Fixtures are designed for Direct Power LED Tubes  
No Ballast Necessary

Wraparound

(Product Number eg.: 400-PV-214-T-277-R)