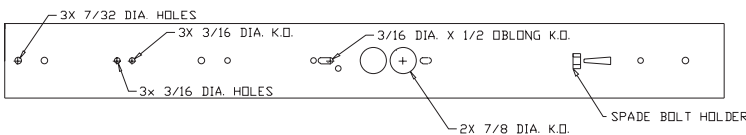


102 Wall Wraparound

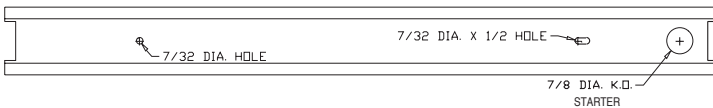


APPLICATIONS
Bathrooms, Stairwells

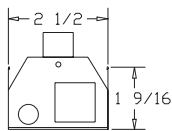
TOP W/O DIFFUSER



COVER

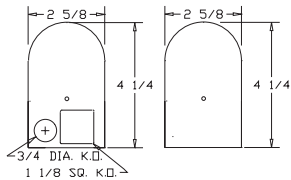


END W/O PLATE

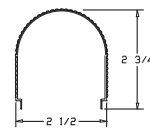


END PLATE

STANDARD PAIR IS ONE PLAIN AND ONE WITH KOS



DIFFUSER RIBBED



REV 3-1-05

T8		T12	
SIZE	LENGTH	SIZE	LENGTH
(1) 15W	18-1/4	(1) 15W	18-1/4
(1) 17W	24-1/4	(1) 20W	24-1/4
(1) 25W	36-1/4	(1) 30W	36-1/4
(1) 32W	48-1/4	(1) 40W	48-1/4

CONSTRUCTION

Die-formed and spot welded 20 guage cold rolled steel housing.

Plastic is held in place on both ends by end caps with a single acorn type nut.

Spot welded for maximum rigidity.

MOUNTING

Wall mounted. Mounts over electrical junction box. Mounting holes are provided. End caps can be removed for continuous row mounting with optional joiner band.

FINISH

Available in chrome or white.

PLASTIC

Ribbed white acrylic diffuser.

ELECTRICAL

Fixtures and components are all assembled by I.B.E.W. union workers, and NYC approved.

Knockouts are provided on the back and ends for all types of wiring.

Slide-on or snap-in sockets are provided.

Ballast and sockets are replaceable without removing the fixture from the mounting surface.

Standard ballasts are electronic 120v.

OPTIONS

Check product key or consult factory for available options.

102 - WR - 1 - [] - [] - [] - [] = Product Number

Series	Description	# of Lamps	Wattage	Size	Voltage	Options
WRaparound		1	15-15w T12		120v	CO - Conv. Outlet
			20-20w T12		277v	SW - Switch
			30-30w T12		UNV	WH - White Body
			40-40w T12			
			17-17w T8			
			25-25w T8			
			32-32w T8			

Wraparound

(Product Number eg.: 400-PV-214-T-277-R)