

# Parabolic Louver



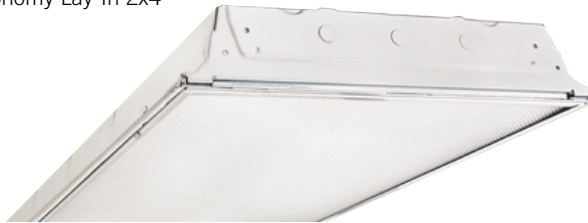
Louvers are shown in recessed fixture

## RECESSED FIXTURES

500 Economy Flange and  
525 Economy Lay-In 1x4



500 Economy Flange and  
525 Economy Lay-In 2x4



800 Surface



## CONSTRUCTION

Anodized aluminum louvers. Precision miters rigidly interlock to maintain parabolic contours that assure proper brightness control.

Paraluminum louvers are 1.5" deep and available in many cell patterns.

## FINISH

Anodized aluminum.

## OPTICS

Adjustable louvers.

## ELECTRICAL

Fixtures and components are all assembled by I.B.E.W. union workers, and are UL and NYC approved.

Knockouts are provided on the back and ends for all types of wiring.

Slide-on or snap-in sockets are provided.

Ballast and sockets are replaceable without removing the fixture from the mounting surface.

Standard ballasts are electronic 120v.

## OPTIONS

Check product key or consult factory for available options.