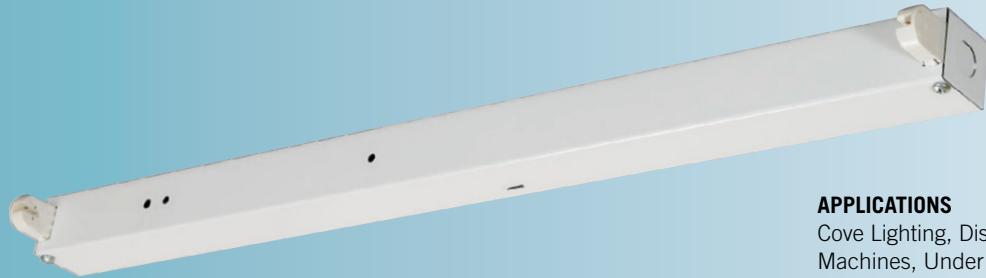


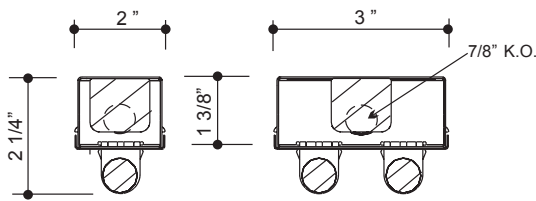


692 T8 Strip

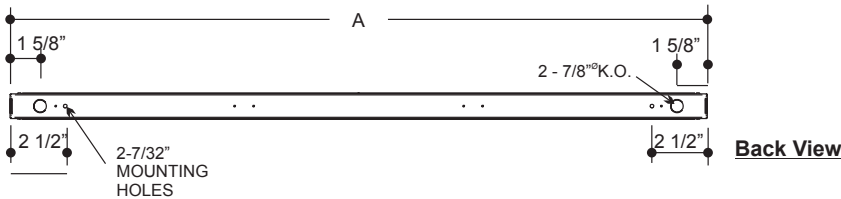


APPLICATIONS

Cove Lighting, Display, Vending Machines, Under Counter



Cross Sections



T8 MODEL CONFIGURATION		Nominal Length	Actual Length A (in.)
One Lamp	Two Lamp		
117	217	2'	24"
125	225	3'	36"
132	232	4'	48"

CONSTRUCTION

Die and brake-formed 20 gauge pre-painted white cold-rolled steel housing. End caps may be joined for continuous row mounting. Knockouts are provided on ends for through wiring.

MOUNTING

Designed for surface mounting. Mounting holes provided.

FINISH

Phosphate coated, highly reflective, baked white enamel.

ELECTRICAL

Fixtures and components are all assembled by I.B.E.W. union workers, and are UL and NYC approved.

Knockouts are provided on the back and ends for all types of wiring.

Slide-on or snap-in sockets are provided.

Ballast and sockets are replaceable without removing the fixture from the mounting surface.

Standard ballasts are electronic 120v.

OPTIONS

Check product key or consult factory for available options.

692	-	KD	-	-	-	-	-	-	=	Product Number
Series	Description	# of Lamps	Wattage	Size	Voltage	Options				
	Knock	1	17-17w T8		120v	EM - Emergency Ballast				
	Down	2	25-25w T8		277v	R - Silver Reflector				
			32-32w T8		UNV	HO - High Output*				
						Dim - Dimmable Ballast				
692-KD										(Product Number eg.: 400-PV-214-T-277-R)