

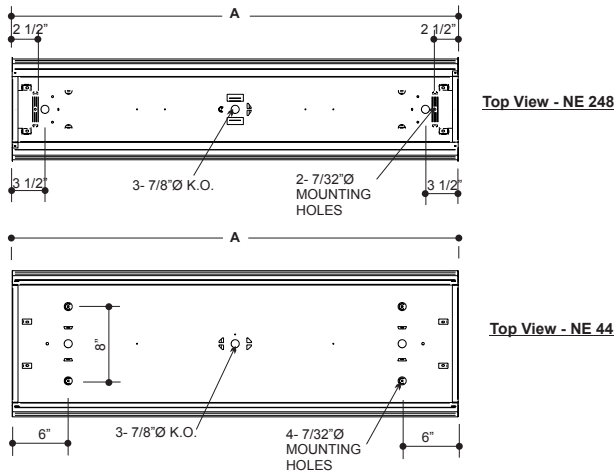


300 Wraparound



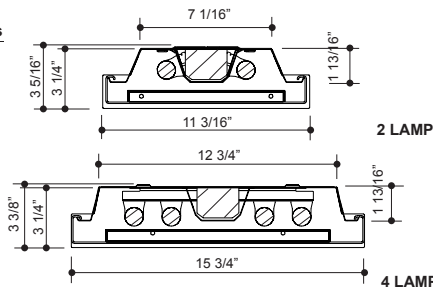
APPLICATIONS

Retail Stores, Offices, Class Rooms, Stairwells, Corridors, Kitchens, Utility Rooms.



Cross Sections

MODEL		LENGTH
CROSS SECTION		A (in)
2 LAMP	4 LAMP	
224	42	24
236	43	36
248	44	48
248/2	448/2	96
296	49	96



CONSTRUCTION

Die formed, 20 gauge pre-painted highly reflective white steel housing. Inspection knockouts provided on 4' units, for mounting to junction box. Ballast cover snaps into place eliminating the need for tools when accessing the ballast. Diffuser hinges from either side in a lift and shift manner and is self centering. End caps may be butted together for continuous row mounting. Knockouts are provided for flexible conduit attachment.

MOUNTING

Mounts over electrical junction box. Offset mounting pads keep the bulb level and slightly off of mounting surface. Mounting holes are offset to prevent distortion of housing when tightening mounting fasteners. Knock-outs are provided for stem mounting.

FINISH

Phosphate coated, highly reflective, baked, white enamel.

PLASTIC

Wraparound, extruded clear acrylic diffuser with prismatic bottom and ribbed linear sides, designed for high efficiency and visual comfort.

ELECTRICAL

Fixtures and components are all assembled by I.B.E.W. union workers, and are UL and NYC approved.

Knockouts are provided on the back and ends for all types of wiring.

Slide-on or snap-in sockets are provided.

Ballast and sockets are replaceable without removing the fixture from the mounting surface.

Standard ballasts are electronic 120v.

OPTIONS

Check product key or consult factory for available options.

300	-	WR	-	-	-	-	=	Product Number		
Series	Description	# of Lamps	Wattage	Size	Voltage	Options				
WRaparound		2	20-20wT12	T-8'	120v	EM - Emergency Ballast				
		4	40-40wT12	Master/Slave	UNV	R - Silver Reflector				
			17-17wT8			Dim - Dimmable Ballast				
			32-32wT8			ST12 - 12" Stem Kit				
			14-14wT5			ST24 - 24" Stem Kit				
			24-24wT5			ST36 - 36" Stem Kit				
			28-28wT5			ST48 - 48" Stem Kit				
			54-54wT5							
		Wraparound							(Product Number eg.: 400-PV-214-T-277-R)	