

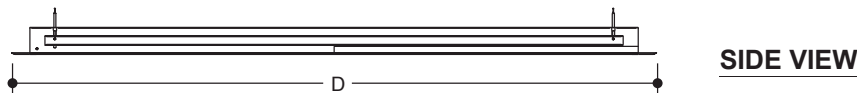
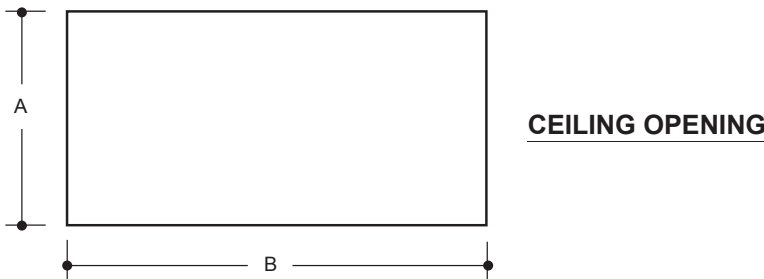
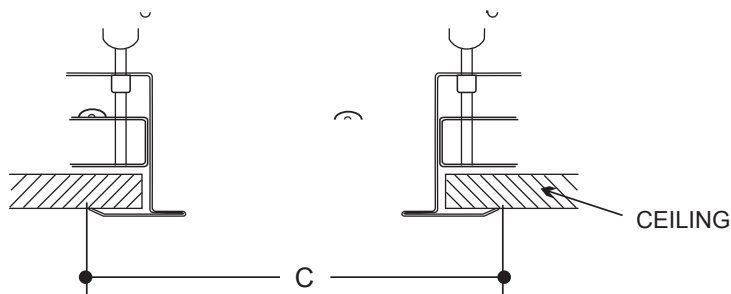


# Flange Kit



**APPLICATIONS**  
Office areas, Retail Stores,  
Recreation Rooms

## (UNIVERSAL) FLANGE KIT



### CONSTRUCTION

Die and brake-formed, heavy guage, cold rolled steel or extruded aluminum. Heavy duty construction.

### MOUNTING

Steel brackets with vertical adjustments for mounting side flanges within ceiling opening. Holes are provided for mounting from a chain. End flanges are pressure-fit and/or removable for row mounting. Requires only 3" clearance over fixture depth. Example: a 4" deep fixture requires only 7" cavity depth (in shallower cavity applications, fixture may be inserted prior to installation of flange kit).

### FINISH

Phosphate coated, highly reflective, baked white enamel.

### ELECTRICAL

Fixtures and components are all assembled by I.B.E.W. union workers, and are UL and NYC approved.

Knockouts are provided on the back and ends for all types of wiring.

Slide-on or snap-in sockets are provided.

Ballast and sockets are replaceable without removing the fixture from the mounting surface.

Standard ballasts are electronic 120v.

### OPTIONS

Check product key or consult factory for available options.

NOMINAL DIMENSIONS	CEILING OPENING		OVERALL FLANGE	
	WIDTH	LENGTH	WIDTH	LENGTH
	A	B	C	D
1x4	12 - 13 1/2"	48 - 49 1/2"	14"	50 7/8"
2x2	24 - 25 1/2"	24 - 25 1/2"	26"	26 7/8"
2x4	24 - 25 1/2"	48 - 49 1/2"	26"	50 7/8"