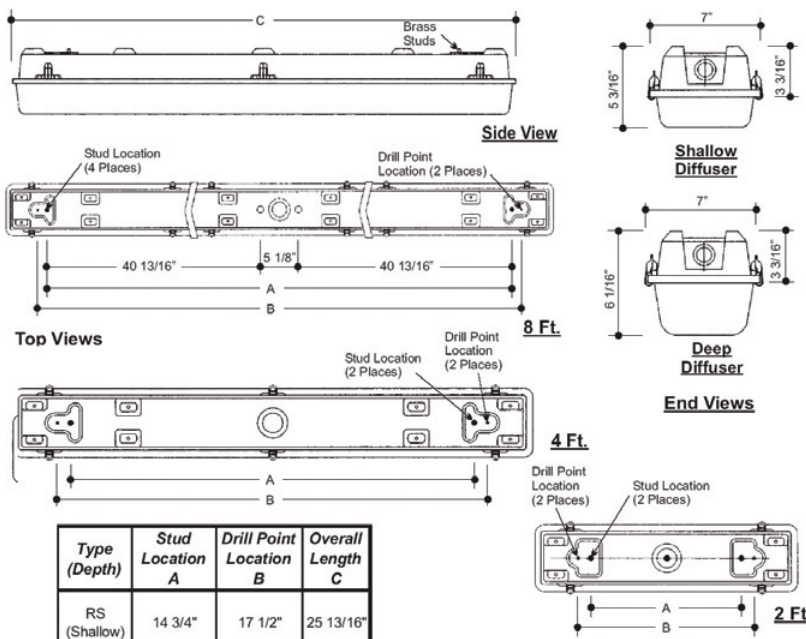


850 Vapor Proof



APPLICATIONS

Parking garages, Workshops, Canopies
Carwash, Cold storage, Food processing
Wet, damp or dusty environments.



Type (Depth)	Stud Location A	Drill Point Location B	Overall Length C
RS (Shallow)	14 3/4"	17 1/2"	25 13/16"
RS (Shallow)	38 3/4"	41 1/2"	49 13/16"
HO (Deep)	38 3/4"	41 1/2"	49 13/16"
RS (Deep)	86 3/4"	89 1/2"	97 13/16"
SL/HO (Deep)	86 3/4"	89 1/2"	97 13/16"

*T8 ONLY

850 - VP - [] - [] - [] - [] = Product Number

Series	Description	# of Lamps	Wattage	Size	Voltage	Options
Vapor Proof		2	40-40w	T12	120v	EM - Emergency Ballast
		3	96-96w	T12	277v	HO - High Output**
		4	32-32w	T8	UNV	Dim - Dimmable Ballast
			28-28w	T5		
			54-54w	T5-HO		

Vapor Proof

(Product Number eg.: 400-PV-214-T-277-R)

CONSTRUCTION

Molded, glass reinforced plastic housing. Internal housing assembly 20 gauge pre-painted white cold rolled steel. Diffuser flange fits into the gasketed retention slot providing a continuous seal, and is held in place with retaining latches. Hole is 7/8" diameter and is provided with a plastic plug on one end for conduit attachment.

MOUNTING

Offset mounting pads which keeps luminaire level and slightly off of mounting surface, are formed within the housing.

FINISH

Phosphate coated, highly reflective, baked white enamel.

OPTICS

Standard diffuser is high impact acrylic with textured pattern designed for high efficiency while providing reduced glare.

ELECTRICAL

Fixtures and components are all assembled by I.B.E.W. union workers, and are UL and NYC approved.

Knockouts are provided on the back and ends for all types of wiring.

Slide-on or snap-in sockets are provided.

Ballast and sockets are replaceable without removing the fixture from the mounting surface. Standard ballasts are electronic 120v.

OPTIONS

Check product key or consult factory for available options.