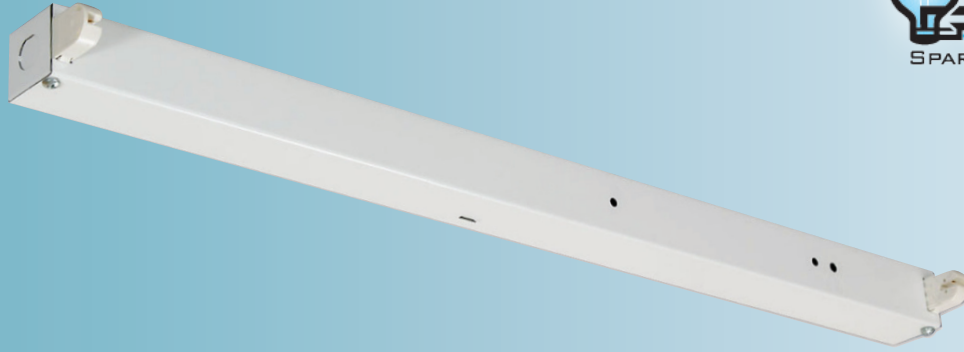


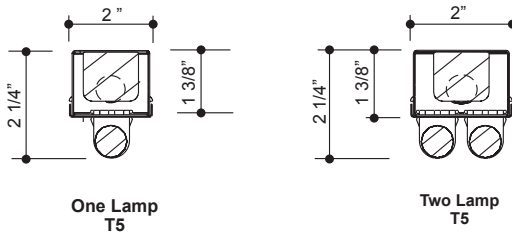


678 T5 Strip

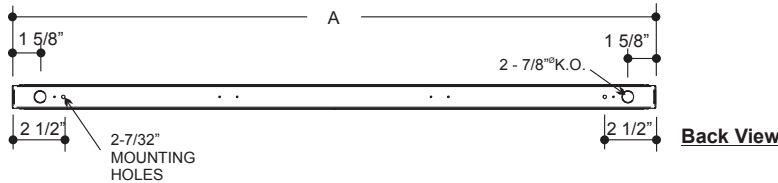


APPLICATIONS

Cove Lighting, Display, Vending Machines, Under Counter



Cross Sections



MODEL CONFIGURATION		Nominal Length	Actual Length
One Lamp	Two Lamp		A (in.)
122	222	2'	22 7/16
134	234	3'	34 1/4
146	246	4'	46 1/16
158	258	5'	57 7/8

CONSTRUCTION

Die and brake-formed 20 gauge pre-painted white cold-rolled steel housing. End caps may be joined for continuous row mounting. Knockouts are provided on ends for through wiring.

MOUNTING

Designed for surface mounting. Mounting holes provided.

FINISH

Phosphate coated, highly reflective, baked white enamel.

ELECTRICAL

Fixtures and components are all assembled by I.B.E.W. union workers, and are UL and NYC approved.

Knockouts are provided on the back and ends for all types of wiring.

Slide-on or snap-in sockets are provided.

Ballast and sockets are replaceable without removing the fixture from the mounting surface.

Standard ballasts are electronic 120v.

OPTIONS

Check product key or consult factory for available options.

678 - KD - [] - [] - [] - [] = Product Number

Series	Description	# of Lamps	Wattage	Size	Voltage	Options
678 T5	Knock Down	1	14-14wT5		120v	EM - Emergency Ballast
		2	21-21wT5		277v	R - Silver Reflector
			28-28wT5		UNV	HO - High Output*
			24-24wT5-HO			Dim - Dimmable Ballast
			39-39wT5-HO			
			54-54wT5-HO			

* Only available in T5 (Product Number eg.: 400-PV-214-T-277-R)