

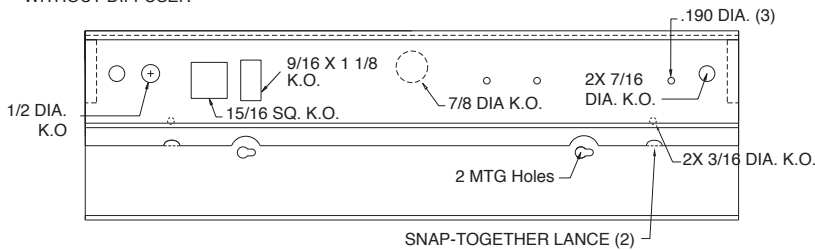
322 Under Cabinet



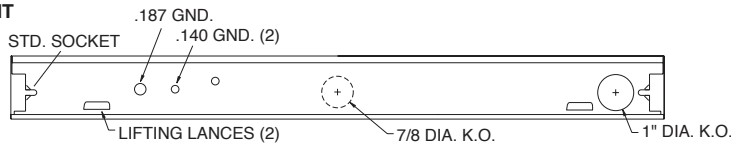
APPLICATIONS

Under Counter, Kitchens, Task Areas, Offices, Display, Bathroom, Utility Rooms

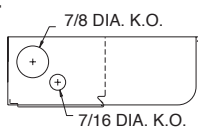
TOP WITHOUT DIFFUSER



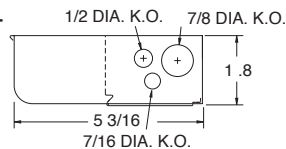
FRONT



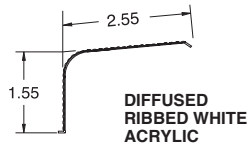
LEFT



RIGHT



T8	
SIZE	LENGTH
(1) 15W	18-1/8
(1) 17W	24-1/8
(1) 25W	36-1/8
(1) 32W	48-1/8



T12	
SIZE	LENGTH
(1) 15W	18-1/8
(1) 20W	24-1/8
(1) 30W	36-1/8
(1) 40W	48-1/8

REV 9-1-05

CONSTRUCTION

Die formed, 20 gauge cold rolled steel One piece folded construction. Diffuser snaps into housing for easy installation and re-lamping. Flattened knockouts are provided on ends for flexible conduit attachment.

Ends may be joined for continuous row-mounting.

MOUNTING

Fixtures are designed for surface mounting. Mounting holes are provided.

FINISH

Phosphate coated, highly reflective, baked, white enamel.

PLASTIC

Extruded white translucent linear acrylic diffuser provides soft illumination.

ELECTRICAL

Fixtures and components are all assembled by I.B.E.W. union workers, and are UL and NYC approved.

Knockouts are provided on the back and ends for all types of wiring.

Slide-on or snap-in sockets are provided.

Ballast and sockets are replaceable without removing the fixture from the mounting surface.

Standard ballasts are electronic 120v.

OPTIONS

Check product key or consult factory for available options.

322	-	UC	-	1	-		-		-		=	Product Number
Series	Description	# of Lamps	Wattage	Size	Voltage	Options						
	Under Cabinet	1	15-15wT12 20-20wT12 30-30wT12 40-40wT12 17-17wT8 25-25wT8 32-32wT8		120v 277v UNV	CO - Conv. Outlet SW - Switch Cord - 8' Cord						
Under Cabinet												
(Product Number eg.: 400-PV-214-T-277-R)												