

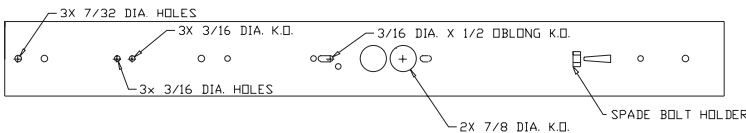
102 Wall Wraparound



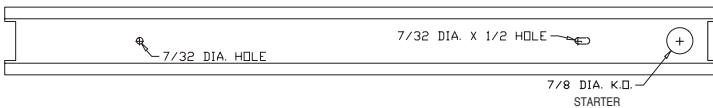
APPLICATIONS

Bathrooms, Stairwells

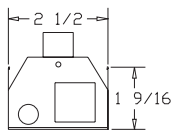
TOP W/O DIFFUSER



COVER

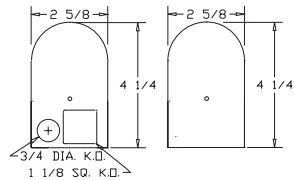


END W/O PLATE

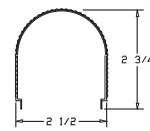


END PLATE

STANDARD PAIR IS ONE PLAIN AND ONE WITH KOS



DIFFUSER RIBBED



REV 3-1-05

T8		T12	
SIZE	LENGTH	SIZE	LENGTH
(1) 15W	18-1/4	(1) 15W	18-1/4
(1) 17W	24-1/4	(1) 20W	24-1/4
(1) 25W	36-1/4	(1) 30W	36-1/4
(1) 32W	48-1/4	(1) 40W	48-1/4

CONSTRUCTION

Die-formed and spot welded 20 gauge cold rolled steel housing.

Plastic is held in place on both ends by end caps with a single acorn type nut.

Spot welded for maximum rigidity.

MOUNTING

Wall mounted. Mounts over electrical junction box. Mounting holes are provided. End caps can be removed for continuous row mounting with optional joiner band.

FINISH

Available in chrome or white.

PLASTIC

Ribbed white acrylic diffuser.

ELECTRICAL

Fixtures and components are all assembled by I.B.E.W. union workers, and are UL and NYC approved.

Knockouts are provided on the back and ends for all types of wiring.

Slide-on or snap-in sockets are provided.

Ballast and sockets are replaceable without removing the fixture from the mounting surface.

Standard ballasts are electronic 120v.

OPTIONS

Check product key or consult factory for available options.

102	-	WR	-	1	-	-	-	-	=	Product Number
Series	Description	# of Lamps	Wattage	Size	Voltage	Options				
Wraparound	WRaparound	1	15-15wT12		120v	CO - Conv. Outlet SW - Switch WH - White Body				
			20-20wT12		277v					
			30-30wT12		UNV					
			40-40wT12							
			17-17wT8							
			25-25wT8							
			32-32wT8							
Wraparound										
(Product Number eg.: 400-PV-214-T-277-R)										